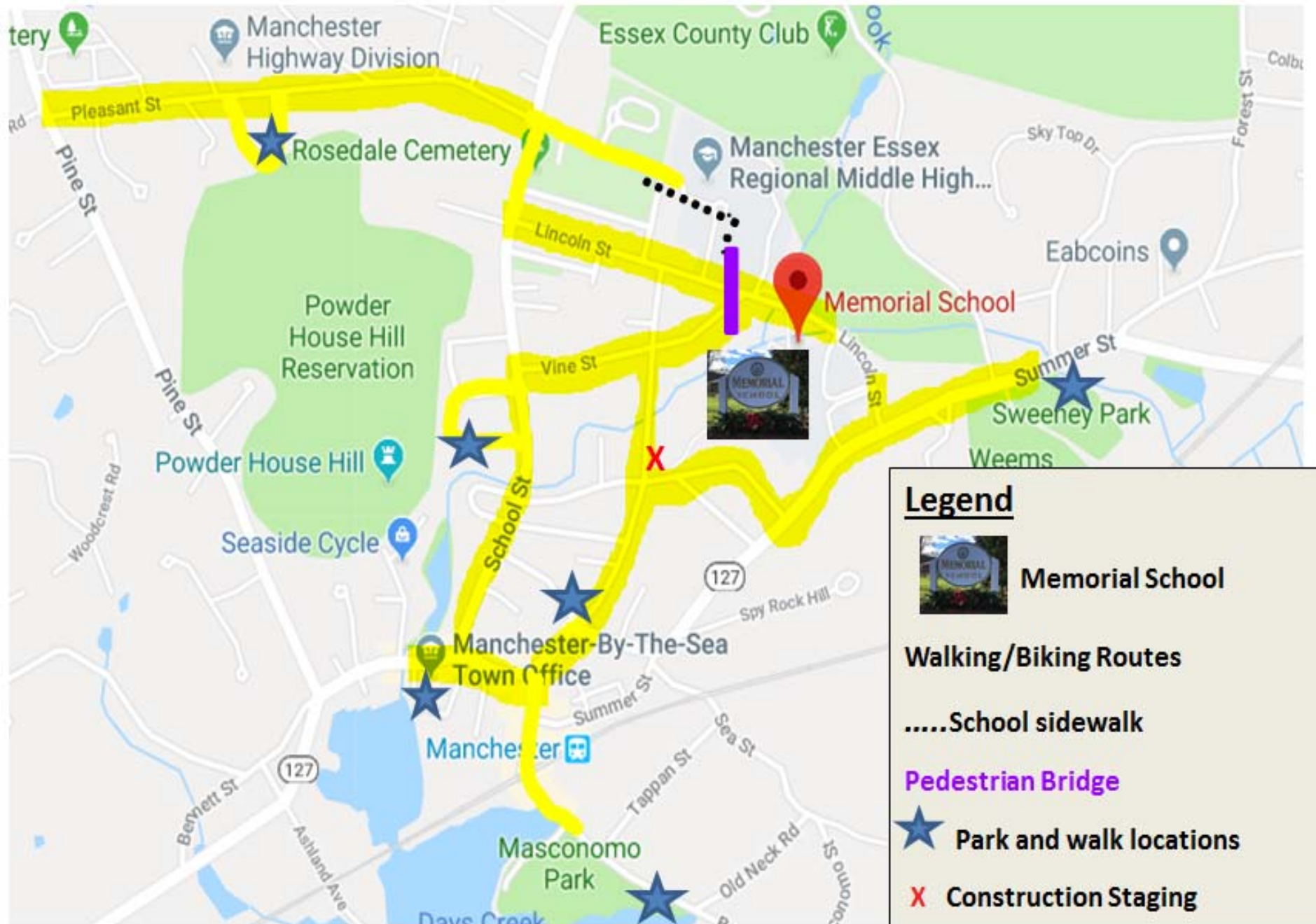
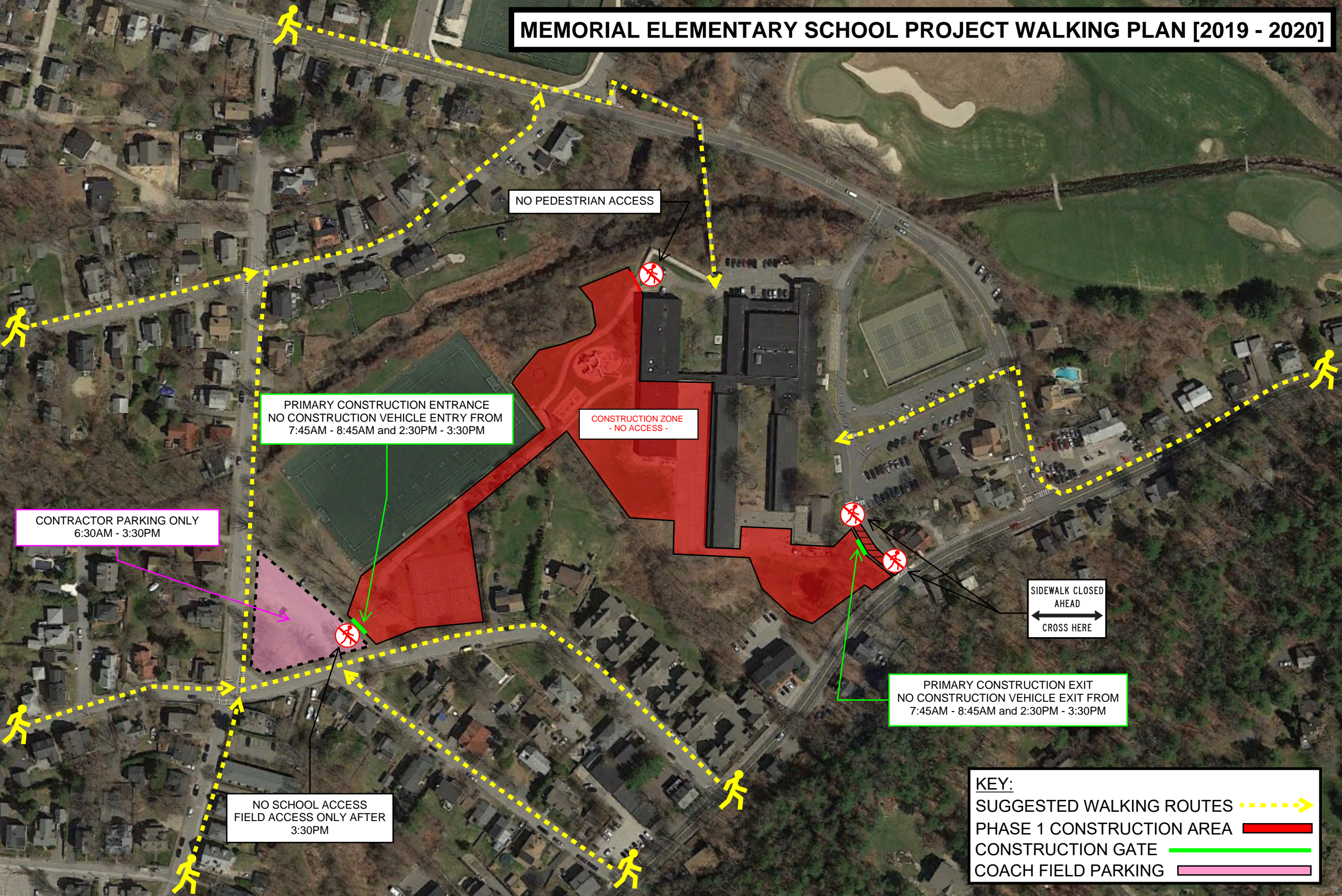




Manchester Memorial School: Safe Routes to School Walking/Biking Map



MEMORIAL ELEMENTARY SCHOOL PROJECT WALKING PLAN [2019 - 2020]



NO PEDESTRIAN ACCESS

PRIMARY CONSTRUCTION ENTRANCE
NO CONSTRUCTION VEHICLE ENTRY FROM
7:45AM - 8:45AM and 2:30PM - 3:30PM





CONSTRUCTION ZONE
- NO ACCESS -

CONTRACTOR PARKING ONLY
6:30AM - 3:30PM

SIDEWALK CLOSED
AHEAD
← CROSS HERE →

PRIMARY CONSTRUCTION EXIT
NO CONSTRUCTION VEHICLE EXIT FROM
7:45AM - 8:45AM and 2:30PM - 3:30PM

NO SCHOOL ACCESS
FIELD ACCESS ONLY AFTER
3:30PM

KEY:
SUGGESTED WALKING ROUTES 
PHASE 1 CONSTRUCTION AREA 
CONSTRUCTION GATE 
COACH FIELD PARKING 

Safety First...Getting to/from MMES 2019-2020

With the on-going construction of the new Memorial School, new safety measures are being suggested to address the well-being of students, teachers, families, and neighbors. Being aware of construction traffic in combination with the area's K-12 parent traffic, one goal is to minimize vehicle use around the school.

Please be mindful of crosswalk, sidewalk, parking lot , and roadway safety.

For student arrival and dismissal, please consider:

- ✓ Walking or biking to school
- ✓ Joining a Walking School Bus that will use the routes on the attached map
- ✓ Riding the school bus
- ✓ Carpooling
- ✓ Using the designated satellite “Park and Walk” locations. Everyone is counting their steps these days and what better way to get ahead in your count than by driving to a common area and walking with your student to school.

Locations include:

- Sweeney Park
- Masconomo Park
- Town Offices
- Norwood Avenue (resident lot)
- Friends Street (on-street parking)
- Pulaski Drive (on-street parking)

The Coach Field lot on Brooks/Norwood Streets is open ONLY for construction. No parent parking or access will be available.